

Williams College '62 Center For Theater & Dance
Williamstown, MA

Proposed Spaces for Lighting Redesign:

1. **Dance Rehearsal Studio** (A large work space): Located on the second floor of the North West corner of the building is a 3200 sq.ft. (65'x50') dance rehearsal studio that is surrounded on three sides by soaring glass curtain walls with an impressive view of the rolling landscape. There's 27 feet from floor to ceiling, which takes the room straight to the underside of the roof, leaving the mechanical and lighting systems exposed overhead and maximizing the volume of the space. The fourth wall of the space which isn't made of glass is covered with mirrors and acoustical panels.



Tasks that will most probably occur in this space are mostly very active, including dancing, aerobics, physical presentation, and theatrical rehearsal. These tasks require an amount of light to comfortably see and perform, similar to a gymnasium or other athletic facility, but can be reduced because the primary equipment being used in the space is the human body. Consideration needs to be placed on the need for theatrical performance lighting in the space to mimic an actual stage for rehearsal purposes. Also, including this second layer of lighting creates a much more dynamic space and could be used for informal performances should the need arise from other performance spaces being in use. Since most of the walls in the room are glass or mirrors, both the view from the exterior and the direction and spill of light within the space need to be carefully considered, as they will have a serious impact on the overall composition of the space.

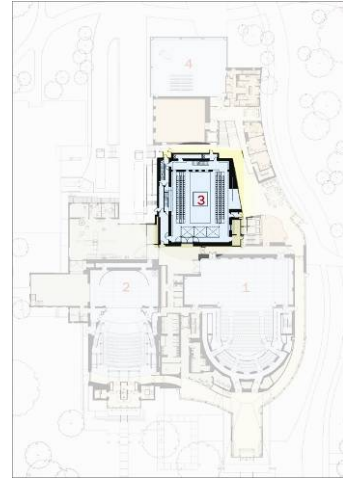


Williams College '62 Center For Theater & Dance
Williamstown, MA



Williams College '62 Center For Theater & Dance
Williamstown, MA

2. **Center Stage** (A special purpose space): The central theatre space of the building, the Center Stage studio theatre is meant to be a dynamic theatrical research lab, capable of holding small intimate performances. The space is 4200 sq.ft. (55'x77') and rises three stories to a height of 30'. It incorporates state-of-the-art technology including a tension wire grid, a "Gala" stage lift, movable Seating / Performance Gondolas and completely reconfigurable seating. The most notable feature of the space is the large metal roll-up door on the east side that connects the space to the occupants walking through the space. This integration of the Center Stage performing arts laboratory develops the interaction and understanding of the population outside of the theatre community, as it's directly connected along the main pathway through the building. The materials of the space provide a direct relation to the state-of-the-art nature of the space, with the heavy use of aluminum, steel, brick, and black tile flooring.



Tasks in this space will be more intensive than the activities in the dance rehearsal studio. Besides the standard theatrical performances and practices being performed in the space, there is also a need to provide appropriate lighting for working with mechanical equipment on the catwalk and throughout the space. Other tasks that may occur include reading and note-taking.

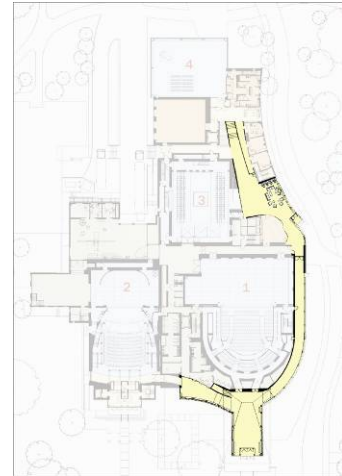


Williams College '62 Center For Theater & Dance
Williamstown, MA



Williams College '62 Center For Theater & Dance
Williamstown, MA

3. **Main Stage Lobby & Main Corridor** (A circulation space): The circulation of the building is made up of 3 defined entry locations and 332 feet of linear serpentine hallway that runs from the south side to the north side that totals 5576 sq.ft. The 1450 sq.ft. southern entry lobby is the signature entrance of the building, created as a luminous box of aluminum and glass curtainwall. This is the entry for the main theatre space in the building, the 550 seat Main Stage, that is home to both community and college theatre productions. One the inside face of the curtainwall, wood slats were designed as permanent louvers to filter daylight into the lobby and warm up the atmosphere of the materials. A second lobby exists in the middle of the corridor: a 1120 sq.ft. breakout lounge that marks the entrance to the Center Stage theatrical laboratory. This is also the point at which the architect has chosen to change the use of materials from a warm wood glow to a more harsh and technical steel and aluminum. This change was characterized as personifying the learning experience as you travel to the “back of the house” of the theatrical world, where things aren’t quite as warm and beautiful as the end result looks on stage. A grand staircase moves occupants from this breakout lounge to the entrance at the north side of the building, which is one story higher than the southern entrance.



The activities that occur in this space are primarily walking and viewing of artwork. However, the breakout lounge in the middle of the corridor creates a necessity to allow for reading and writing within this portion. Careful attention will need to be taken when determining fixture choices in this space to appropriately change the mood of the corridor with the change in material. It will be important to maintain the emotional connotation of the space as is defined by the architecture and creating the glow of the southern lobby.

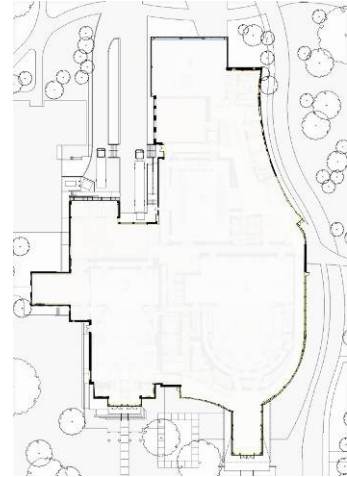


Williams College '62 Center For Theater & Dance
Williamstown, MA



Williams College '62 Center For Theater & Dance
Williamstown, MA

4. **Building Façade** (An outdoor space or building façade):
The façade of the building is currently unlit other than the glowing effects of the interior lighting. There's path lighting at the entry drive for safety, but the rest of the site is relatively unlit as well. The façade heights range from 24 to 80 feet and combine a combination of limestone veneer, glass and aluminum curtainwall, and brick. Most of the façade is surrounded by grass and is not meant to be walked along. However, there are focal points in the façade at defined entrances at the south and north ends of the building, and at a small paved courtyard on the east side. These entrances, especially the southern end, will need to be address in the lighting solution to make sure they stand out as prominent pieces of the architectural language. There's a significant number of trees on the sight which may block the view of building façade lighting and should be incorporated into the analysis to make sure lighting isn't being used in places it wont be seen.



Williams College '62 Center For Theater & Dance
Williamstown, MA



Williams College '62 Center For Theater & Dance
Williamstown, MA

